

## Building churches to Build the Church in Cambodia

We are very close to the completion of our Regional Ministry and Worship Center in Phnom Penh, Cambodia. This facility will provide a place of worship, facilities for ministry training, leadership development, fellowship, and empowering our growing community of Christ followers in Cambodia. We see this center as a key strategic element in the vision to evangelize Southeast Asia for Jesus Christ.



### Background: Central American Mission provides seeds for ministry development in Cambodia

The sale of ministry facilities in Guatemala generated the initial funding to purchase land and begin construction of facilities in our pioneer Cambodian mission field. Pictured here; current Battambang facility and original structure (lower left).

### Proven strategy for ministry facilities development:



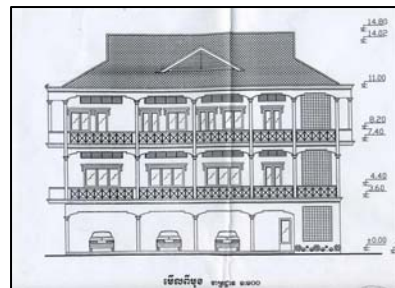
By constructing the building framework, the basic support infrastructure of the building (foundation, support beams, floors, and roof), we provide the foundation for the local church to complete the construction of their church facility. The success of the

Battambang project has enlivened and encouraged the Phnom Penh congregation to undertake the construction of an expanded worship and ministry facility.



### Fostering Ownership:

Under the oppressive Khmer Rouge regime and the subsequent decades in refugee camps, a culture of dependence became a persistent reality in a generation of Cambodians. In order to foster a sense of responsibility and personal accountability, we place the burden of finishing the construction of exterior and interior walls, doors, windows, electrical, plumbing, painting, and flooring. This fosters a sense of ownership and has done wonders to encourage their creativity and work ethic.



### Multiplying Ministry:

Building a place of worship for Christians, in a country where Christ followers are about 1% of the population, is a significant response to the Great Commission. Not only does the church facility create a place to gather and share the Gospel of Christ, but it provides a place for training committed Christian leaders in the process of discipleship, and practical ministry skills. Pastors and church leaders who travel from around the

country to receive training and encouragement, are happy to have a place to stay when they are away from home. Note: in the photo of these church members, the local church has already begun to fill in walls and windows on the second floor of the new structural framework.



**How you can help:**

We are in the final stages of completing the building framework to hand over to the local church to finish the construction and occupy these new ministry facilities. We need to generate approximately \$40,000 for the remaining labor and materials. Costs are comparatively low in Cambodia; approximately \$15/sqft., yet this is a lot of money in local Cambodian terms. Please look at the following cost breakdown, and let us know how you can participate in bringing this project to completion:

- Concrete Roof support columns and concrete beams-Includes materials and labor for setting rebar, forming and pouring concrete. \$ 9,000
  - Concrete roof apron slab approximately 3 to 6 feet wide and 240 feet long. \$ 3,000
  - Steel Roof Trusses: Includes materials and labor to fabricate and install steel roof trusses on third floor. \$12,000
  - Roofing: Includes materials and labor to install roofing material. \$ 8,000
  - Office and Bathroom: Materials and labor to install interior walls, window, and door for one office. Materials and labor to install interior walls, toilet and sink for bathroom. \$ 3,000
  - Contingency for material cost increases: Material costs here seem to increase daily. Example: Costs for second floor slab, beams and columns concrete and steel increased approximately \$3000.00 from October 2007 to February 2008 \$ 5,000
- Total \$ 40,000

**Together, we can make a difference. Look at how a little goes a long way.**

- If 20 churches made a 3 month commitment of \$750/mo. We would exceed our goal. For a church to raise \$750 would take 50 members giving \$15.
- If 2 churches raised \$5000/month for three months, we would have \$30,000 toward our goal. For churches with 200+ members this would mean \$25/month for 200 people
- If 2 of our larger churches raised \$7500/month for a three month period, we would exceed our goal.

For more information, please contact Steve Harvey in Cambodia at [steveh@friendchurchsw.org](mailto:steveh@friendchurchsw.org), or Jeff Davis at the EFCSW Equipping Center, [jeffd@friendchurchsw.org](mailto:jeffd@friendchurchsw.org).

Serving Christ in Cambodia,

Steve Harvey